

# Wedding Packages & Additional Details

| <b>Option 1 - Rehearsal, Wedding &amp; Reception (Single day event)</b> |                             |
|---|-----------------------------|
| Max Number of Guests  | 75                          |
| Wedding/Rehearsal   | Chapel or Patio             |
| Reception   | Lower Gathering Area or Gym |
| <b>\$1,000</b>  |                             |

| <b>Option 2 - Rehearsal &amp; Wedding only (2-day event, smaller)</b> |                              |
|---|------------------------------|
| Max Number of Guests  | 150                          |
| Wedding/Rehearsal   | Chapel or Patio (75 or less) |
| Reception   | Off Site                     |
| <b>\$750</b>  |                              |

| <b>Option 3 - Rehearsal &amp; Wedding only (2-day event, larger)</b> |                |
|--|----------------|
| Max Number of Guests   | 750            |
| Wedding/Rehearsal  | Worship Center |
| Reception  | Off Site       |
| <b>\$1,000</b>   |                |

| <b>Option 4 - Rehearsal, Wedding &amp; Reception (2-day event, smaller)</b> |                             |
|---|-----------------------------|
| Max Number of Guests  | 150                         |
| Wedding/Rehearsal   | Chapel                      |
| Reception   | Lower Gathering Area or Gym |
| <b>\$1,500</b>  |                             |

| <b>Option 5 - Rehearsal, Wedding &amp; Reception (2-day event, larger)</b> |                       |
|--|-----------------------|
| Max Number of Guests   | 300                   |
| Wedding/Rehearsal  | Gym or Worship Center |
| Reception  | Gym                   |
| <b>\$2,000</b>   |                       |

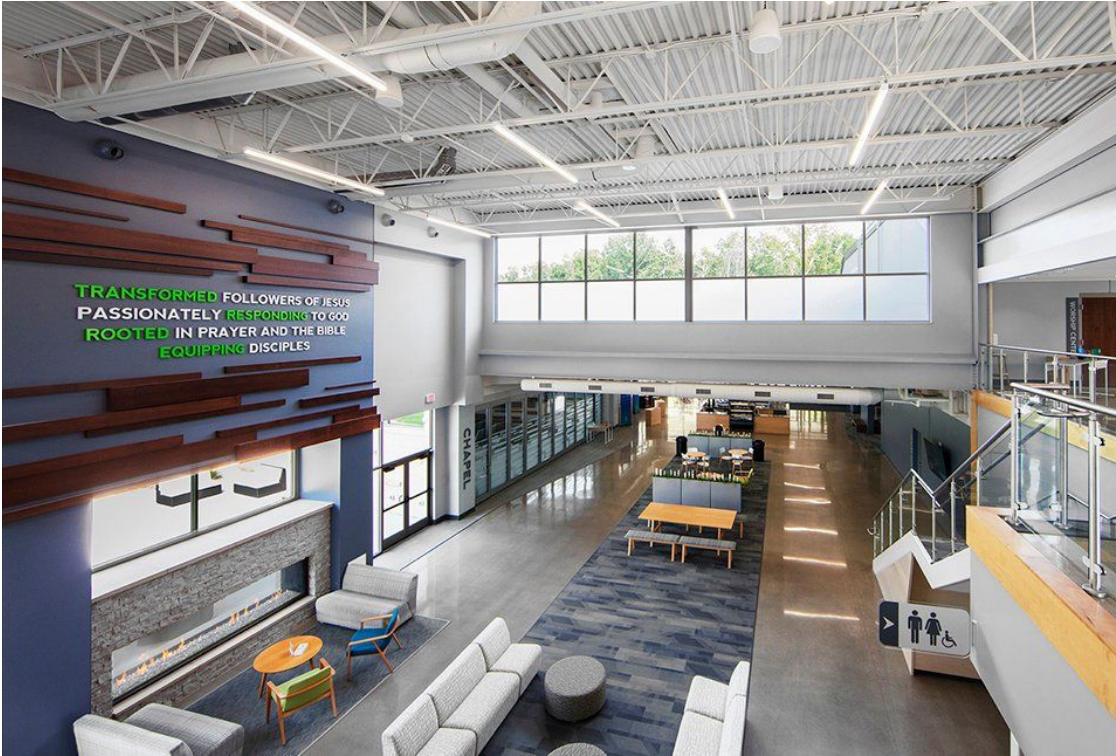
## PLEASE NOTE...

- All wedding details will be handled through the Chapel Pointe Wedding Coordinator.
- Package prices include: Wedding Coordinator, custodial services, room setup/tear down (tables & chairs), AVL support, and kitchen/restroom access.
- If the bride or groom are members or close relatives of a member (parents, siblings, children), they will receive a 25% discount off the above prices.
- All events must be completed and guests out of the building by 6 pm on Saturdays. No exceptions.
- Dressing rooms will be in Rooms 117 (Bride-Lower Level) and 203A (Groom-Upper Level). Windows will be covered for privacy.
- Existing furniture will stay in current location (Example: tables/chairs on concrete floors in Gathering Areas). Additional tables/chairs can be requested by the Bride & Groom.
- Anything used outside on the Patio and/or North Lawn must be provided by the couple.

Worship Center – seats 750



Lower Gathering Area –



Chapel – seats 150



Patio – seats 75

